

50/41

50/41

A PLANNED UNIT DEVELOPMENT

PLAT NO. 2 OF BAY WINDS

BEING A SUBDIVISION OF LAND IN
SECTION 27, TOWNSHIP 47 SOUTH, RANGE 41 EAST
PALM BEACH COUNTY, FLORIDA
SHEET 3 OF 3
OCTOBER, 1984

FLORIDA FRUIT LANDS COMPANY'S SUBDIVISION NO. 2 PLAT BOOK 1 PAGE 102

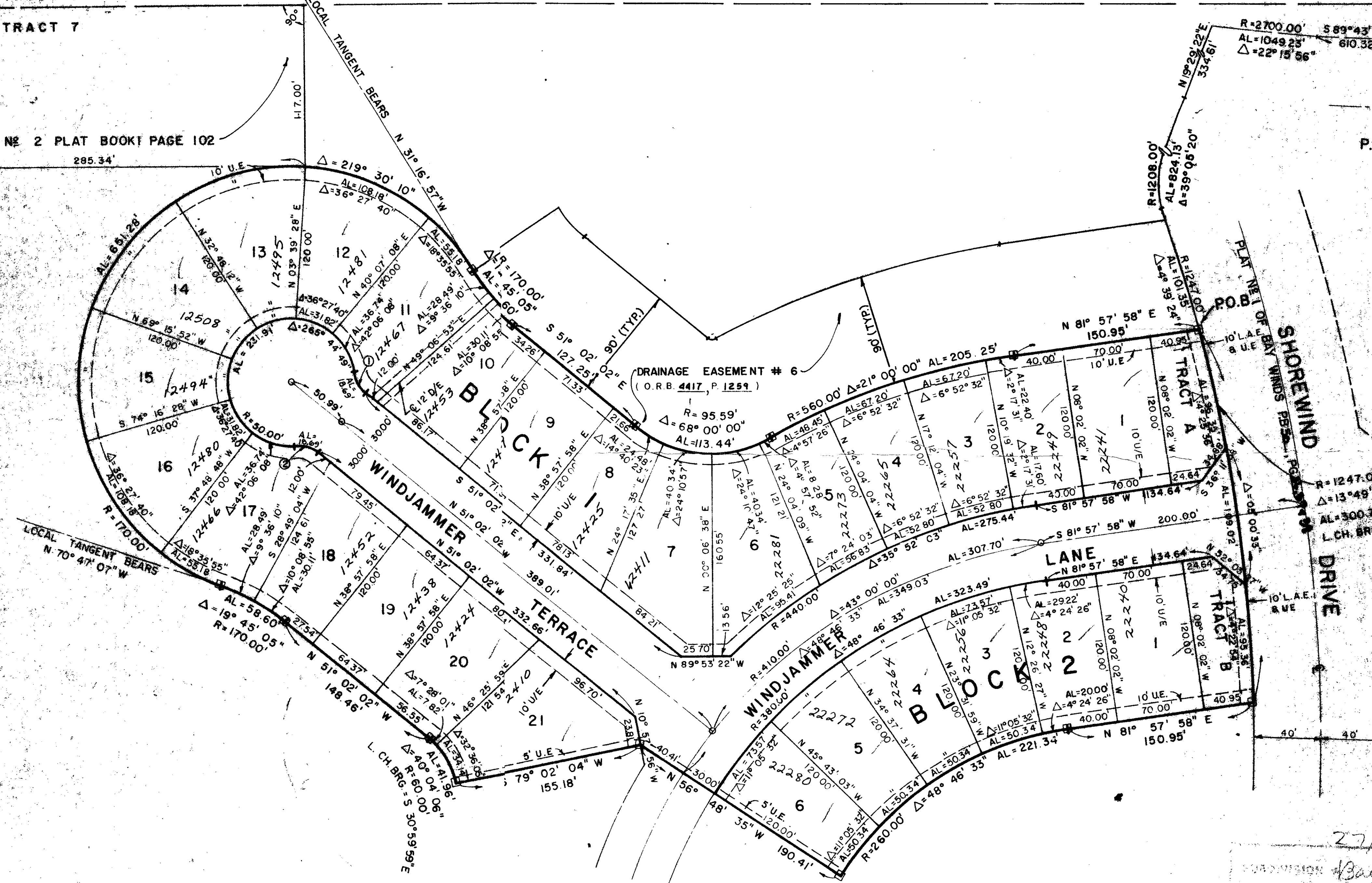
FLORIDA FRUIT LANDS COMPANY'S SUBDIVISION NO. 2 PLAT BOOK 1 PAGE 102

DRAWING NUMBER

DRAWING NUMBER

DRAWING NUMBER

30' PLATTED ROADWAY ABANDONED IN ORB 3682, PAGES 1819 THRU 1821



NOTE
ALL LOT LINES RADIAL UNLESS OTHERWISE NOTED

Curve No.	Radius	Delta	Arc Length
2	25.00'	42°50'00"	18.69'
	25.00'	42°50'00"	18.69'

Refer: H.C. No. 390, Comp. File 95/6
Field Book No. W102 Pg. 37
Design R. BRIETENBACH
Drawn L. BISPOTT
Checked P. KRICK

ROBERT E. OWEN & ASSOCIATES, INC.
ENGINEERS - PLANNERS - SURVEYORS
WEST PALM BEACH, FLORIDA

27/10/84
SUBDIVISION Bay Winds 2
PAGE 41
ZONING RT
ZIP CODE 33435
PUD NAME Bay Winds
0201-002

PLAT NO. 2 of BAY WINDS
A PLANNED UNIT DEVELOPMENT

NO. 54-185
DATE 1-50
JULY, 1982
3